

## Flower Petals Lace Shrug

Designed by Shelia January

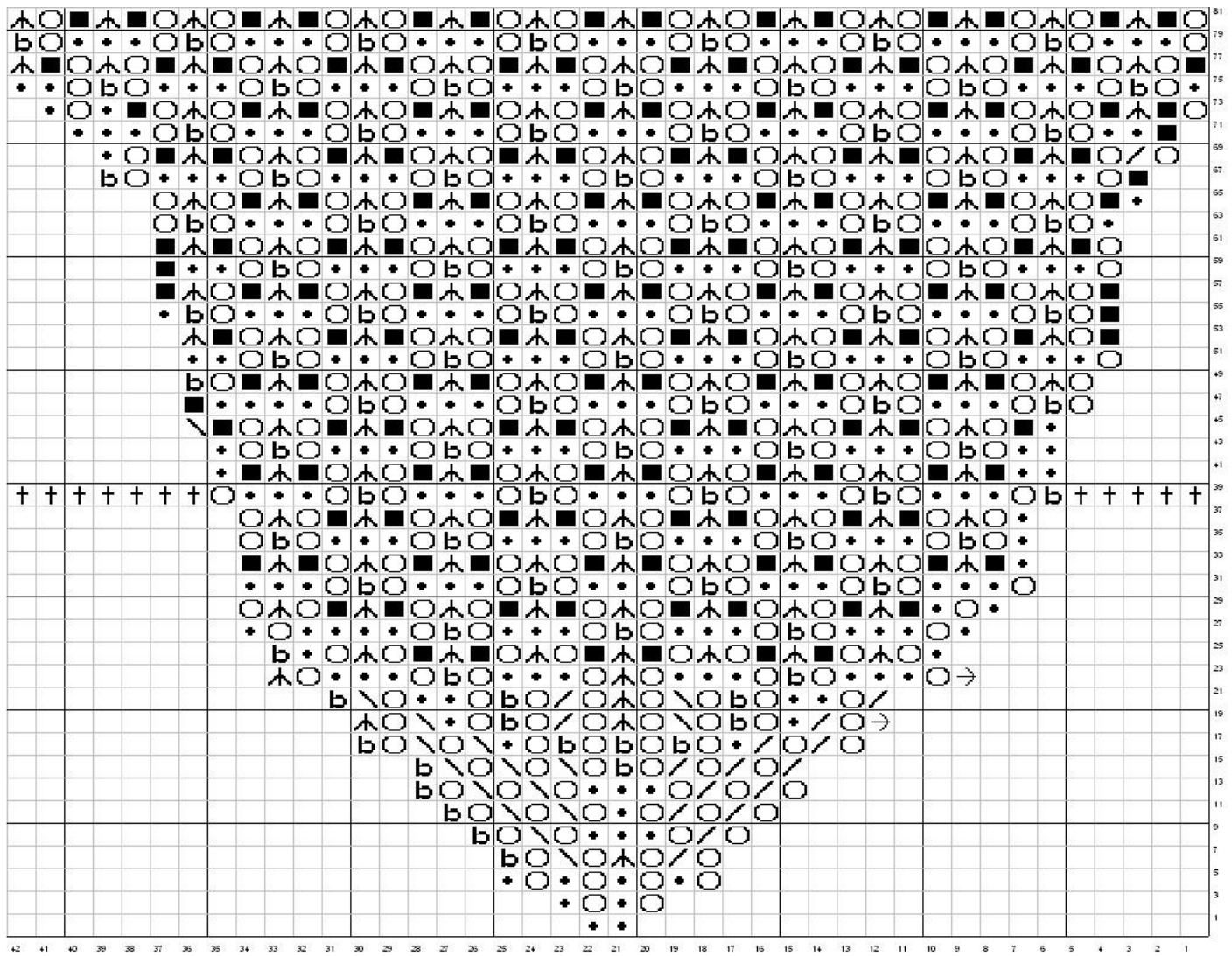
For Spirit Trail Fiberworks

### Chart Legend

•	Knit
<b>b</b>	Knit through the back loop
/	Knit 2 together
↘	Knit 2 together with the next body stitch on the left needle
↙	SSK (slip, slip, knit 2 slipped stitches together)
↘↙	SSK with next body stitch, yarn to back between SSK's
↘↙↘	Centered double decrease (SL 2, K 1, P2SSO)
○	Yarn over
■	No stitch (placeholder on chart only)
→	Slip stitch to the end of previous section, replacing marker

**Important Note** – the petals of the center floral motif are formed on the **sides** of each section as Rows 7 through 23 are worked. On Rows 21 and 23, you will be moving stitches from the beginning of each section to the end of the previous section in order to work the decreases that form the petals, in other words, you'll be moving the stitch markers so that the final double decrease in each section is incorporating stitches from the two adjoining sections. Please read the chart legend and chart carefully at this point so that the petals form.

# Body Chart



The stitch count in each row fluctuates dramatically once the work has progressed past Row 21. Because of the “no stitch” symbols, this is not readily apparent when looking at the chart. To assist in checking the stitch count as the shrug is worked, the ending number of stitches in each section, by row, is listed below. (Don’t worry about the changes in stitch count, this is what creates the openness of the stitch pattern, it will be a flat fabric)

- Row 1                    2 stitches
- Row 3                    4 stitches
- Row 5                    8 stitches
- Row 7                    8 stitches
- Row 9                    10 stitches
- Row 11                   12 stitches
- Row 13                   14 stitches
- Row 15                   14 stitches
- Row 17                   18 stitches
- Row 19                   18 stitches
- Row 21                   20 stitches

Row 23	24 stitches
Row 25	18 stitches
Row 27	26 stitches
Row 29	19 stitches
Row 31	28 stitches
Row 33	18 stitches
Row 35	28 stitches
Row 37	20 stitches
Row 39	30 stitches
Row 41	20 stitches
Row 43	30 stitches
Row 45	21 stitches
Row 47	31 stitches
Row 49	22 stitches
Row 51	33 stitches
Row 53	22 stitches
Row 55	33 stitches
Row 57	22 stitches
Row 59	33 stitches
Row 61	22 stitches
Row 63	34 stitches
Row 65	24 stitches
Row 67	36 stitches
Row 69	26 stitches
Row 71	38 stitches
Row 73	28 stitches
Row 75	42 stitches
Row 77	28 stitches
Row 79	42 stitches
Row 81	28 stitches